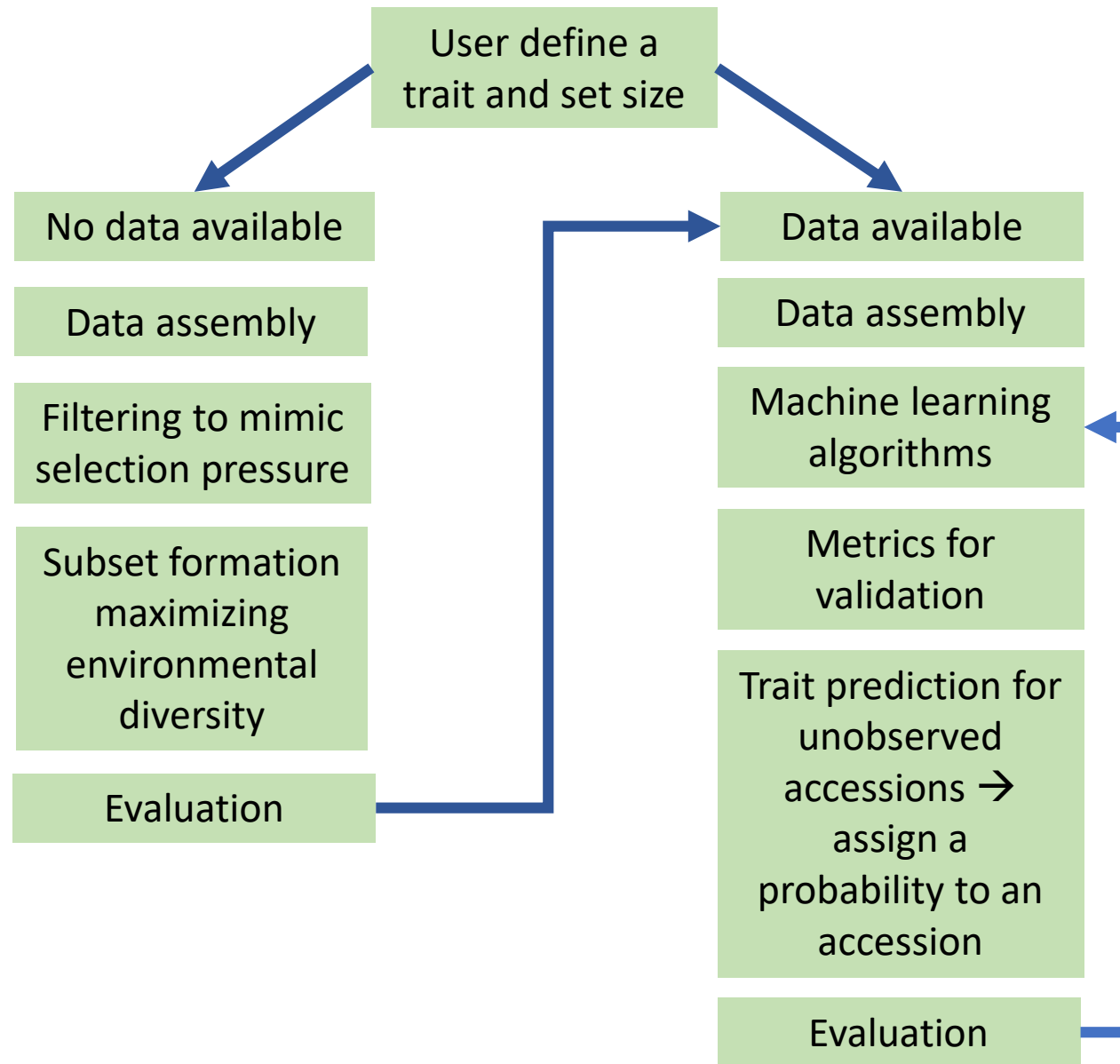
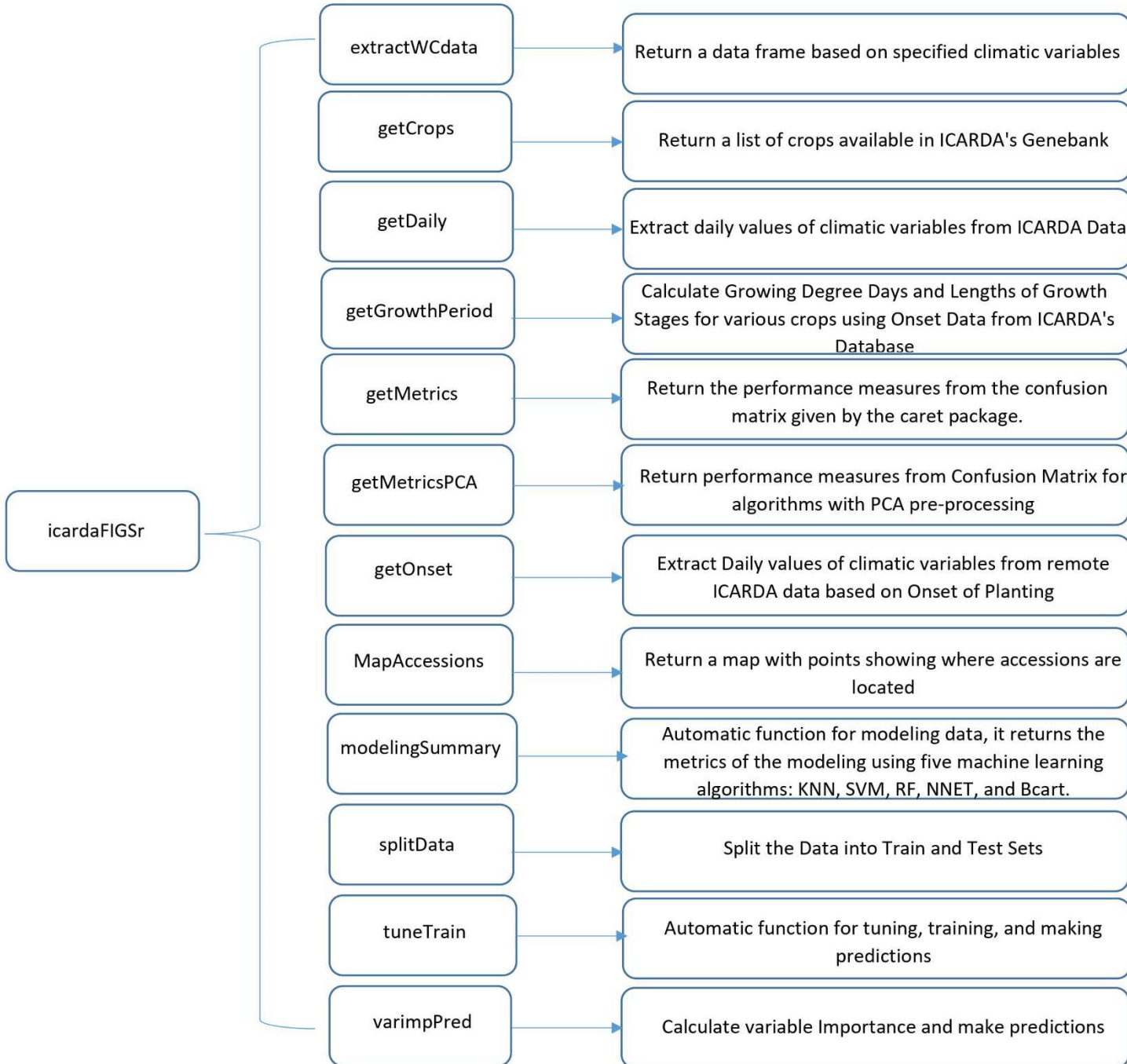




Graphic user interface for FIGS: curating and mining genetic resources

FIGS pathways

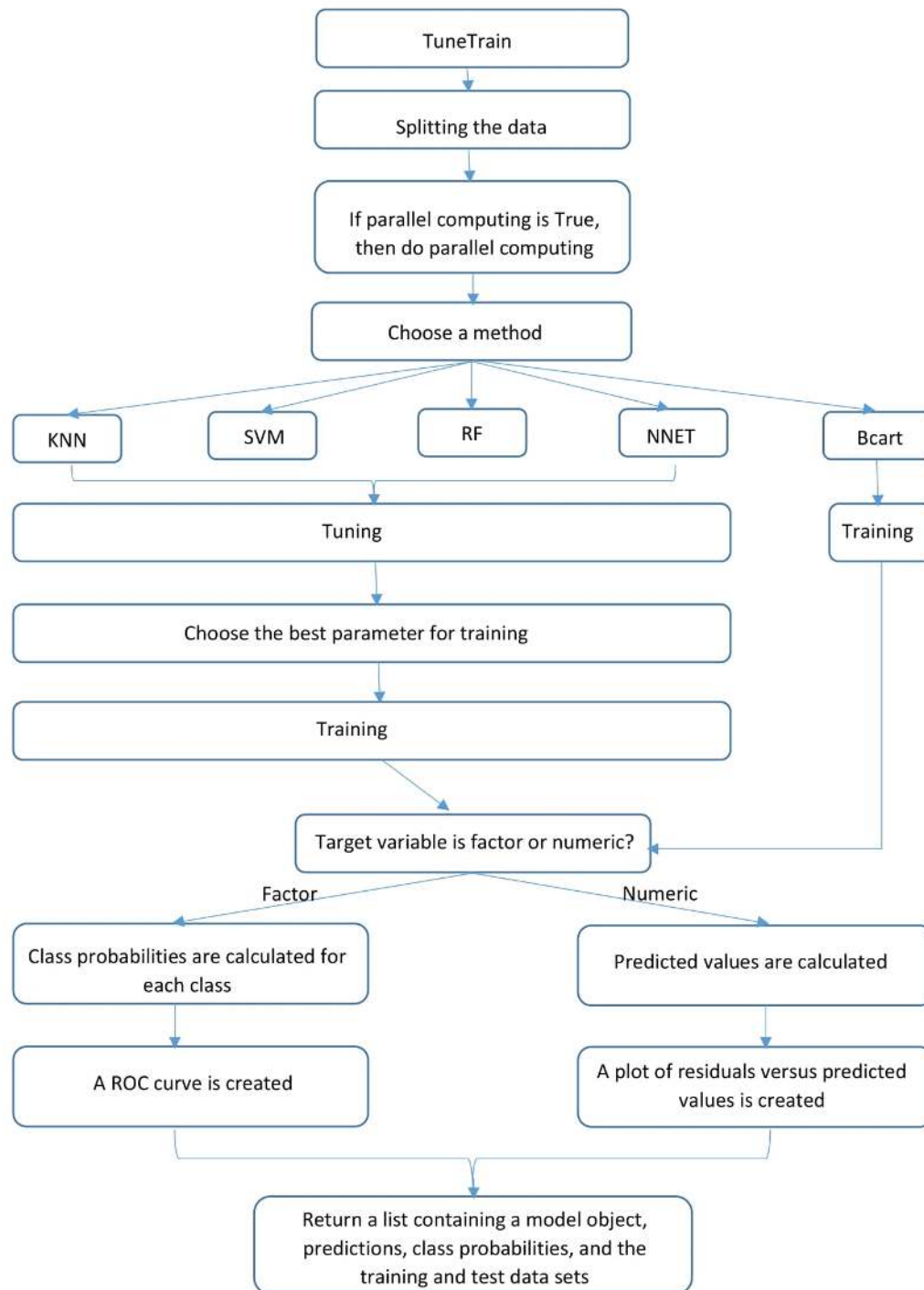




Tools: R package

<https://cran.r-project.org/web/packages/icardaFIGSr/index.html>

Tools: R package



- **TuneTrain** is an automatic function for tuning and training data, it returns a list containing a model object, predictions, class probabilities, and the training and test data sets
- **TuneTrain**(data, y, p = 0.7, method = method, parallelComputing = F, length = 10, control = "repeatedcv", number = 10, repeats = 10, process = c('center', 'scale'), summary= multiClassSummary,positive, ...)

FIGS Graphic User Interface

The screenshot shows a web browser window with the URL 127.0.0.1:4085. The browser's address bar includes navigation icons and the text 'Incognito'. The page has a navigation menu with 'ICARDA FIGS', 'Accessions', 'World Climatic Data', and 'Trait Analysis'. The 'Accessions' tab is active. The main content area is divided into two sections: 'Extract Accessions' and 'Mapping'. The 'Extract Accessions' section contains three radio buttons: 'Get Accessions by Crop Name', 'Get Accessions by IG' (which is selected), and 'Upload External Data'. Below these is an 'Upload CSV File' section with a 'Browse...' button and the text 'No file selected'. There is also a 'Select Identifier' dropdown menu and a 'Select country(ies)' dropdown menu with 'Countries' selected. A 'Get Accessions' button is located at the bottom of this section. The 'Mapping' section is partially visible at the bottom. On the right side, there are three tabs: 'Table', 'Map', and 'Plot'. A 'clideo.com' watermark is visible in the bottom right corner of the page.



Funds by:



ACIAR

Thank you!
Questions/Comments?



Genebank
Platform